

Confined Space Inventory for Saint Cloud Public Schools



Inspector: Rachel Koehler

Inspection Date: 1/16/2007

Building: District Service Building

Location: Carpenter's Shop

Type of Space: Sump

Space Classification: Permit

Potential Hazards:

Potential for oxygen deficiency

Engulfment

Number of Entries into Space: 1

Other Considerations:

Biological

City sewer or water

Slick/wet surfaces

Comments: Lockout/Tagout procedures for pumps are required prior to entry.

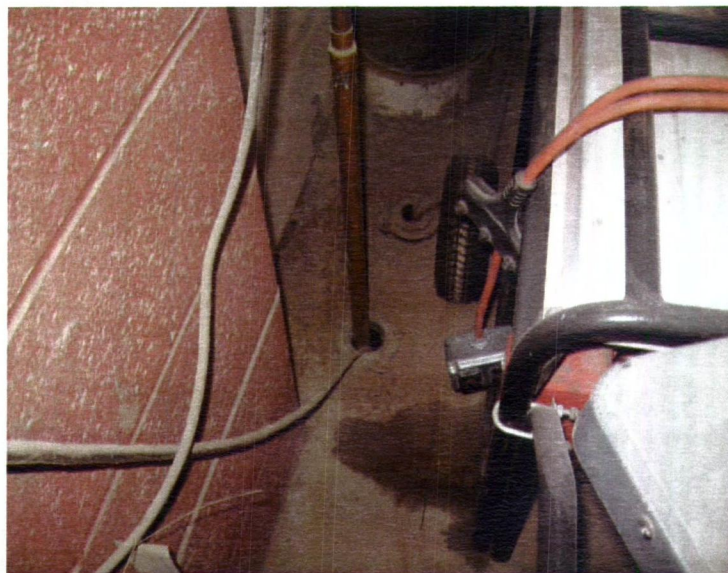


Photo Date: 1/16/2007

Photo Description

Sump

Confined Space Inventory for Saint Cloud Public Schools



Inspector: Rachel Koehler

Inspection Date: 1/16/2007

Building: District Service Building

Location: Wash Bay

Type of Space: Sanitary sewer

Space Classification: Permit

Potential Hazards:

Potential for oxygen deficiency

Engulfment

Configuration

Number of Entries into Space: 1

Other Considerations:

City sewer or water

Fall hazards

Poor lighting

Slick/wet surfaces

Comments: None



Photo Date: 1/16/2007

Photo Description

Sanitary Sewer

Confined Space Inventory for Saint Cloud Public Schools



Inspector: Rachel Koehler

Inspection Date: 1/16/2007

Building: District Service Building

Location: The Annex - Exterior Building East side

Type of Space: Storm sewer (3)

Space Classification: Permit

Potential Hazards:

Potential for oxygen deficiency

Engulfment

Configuration

Number of Entries into Space: 1

Other Considerations:

City sewer or water

Fall hazards

Poor lighting

Slick/wet surfaces

Comments: None



Photo Date: 1/16/2007

Photo Description

Storm Sewer